

# UKREiIF 2026 — MONTAGU EVANS PERSPECTIVE

## Our 11 UKREiIF Takeaways



**MOVE BEYOND “PARTNERSHIPS”  
TO DELIVERY-DRIVEN  
MATCHMAKING**



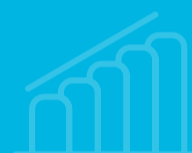
**UNLOCKING HOUSING  
NEEDS SIMPLE CLARITY  
AND CONFIDENCE**



**REUSE IS RISING — BUT  
REQUIRES A SYSTEM-WIDE  
RESPONSE**



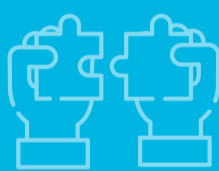
**PUBLIC SECTOR NEED TO  
INTENTIONALLY INTERVENE TO  
TURBO CHARGE DELIVERY**



**THE BEST PARTNERSHIPS ARE  
CREATED AND CONTINUOUSLY  
IMPROVED TO ENSURE THEY  
ARE HIGH PERFORMING**



**VIABILITY IS A  
COMMUNICATION ISSUE AS  
MUCH AS A TECHNICAL ONE**



**A CHANGING POLITICAL  
LANDSCAPE REQUIRES  
ACTIVE ENGAGEMENT, NOT  
ASSUMPTIONS**



**ONE VOICE, STRONGER  
INFLUENCE: THE SECTOR  
NEEDS TO SPEAK CLEARLY TO  
GOVERNMENT**



**WINNING SUPPORT: MAKE THE  
BENEFITS REAL AND MORE  
THAN JUST ABOUT FINANCIAL  
RETURN — AND STICK TO THEM**



**REBRAND HOUSING: FROM  
POLITICAL CHALLENGE TO  
ECONOMIC ENGINE**



**USE PLANNING, DEVELOPMENT  
AND INVESTMENT TOOLS AS A  
SHOP-WINDOW FOR PLACES.  
THAT EXCITES AND ATTRACTS  
DELIVERY.**



The market is only getting more complex – but that's where we thrive.

We're set up to help you cut through the noise, navigate uncertainty and unlock value where others can't.

**GET IN TOUCH WITH ONE OF OUR EXPERTS TO DISCUSS MORE.**



**ALAN HARRIS**

Managing Partner

E [Alan.harris@montagu-evans.co.uk](mailto:Alan.harris@montagu-evans.co.uk)



**ADRIAN OWEN**

Head of Residential

E [Adrian.owen@montagu-evans.co.uk](mailto:Adrian.owen@montagu-evans.co.uk)



**JENNY RYDON**

Head of Public Sector

E [Jenny.Rydon@montagu-evans.co.uk](mailto:Jenny.Rydon@montagu-evans.co.uk)



**JON BRADBURN**

Partner – Planning – Housing & Land

E [Jon.bradburn@montagu-evans.co.uk](mailto:Jon.bradburn@montagu-evans.co.uk)



**KEVIN WHITE**

Partner – Asset & Investment Advisory

E [Kevin.white@montagu-evans.co.uk](mailto:Kevin.white@montagu-evans.co.uk)



**EMMA LAWRENCE**

Partner – Planning – Historic Environment & Townscape

E [Emma.lawrence@montagu-evans.co.uk](mailto:Emma.lawrence@montagu-evans.co.uk)



**OLIVER MAURY**

Head of Development and Strategic Advisory

E [Oliver.maury@montagu-evans.co.uk](mailto:Oliver.maury@montagu-evans.co.uk)



**JON NEALE**

Director of Research & Insight

E [Jon.neale@montagu-evans.co.uk](mailto:Jon.neale@montagu-evans.co.uk)