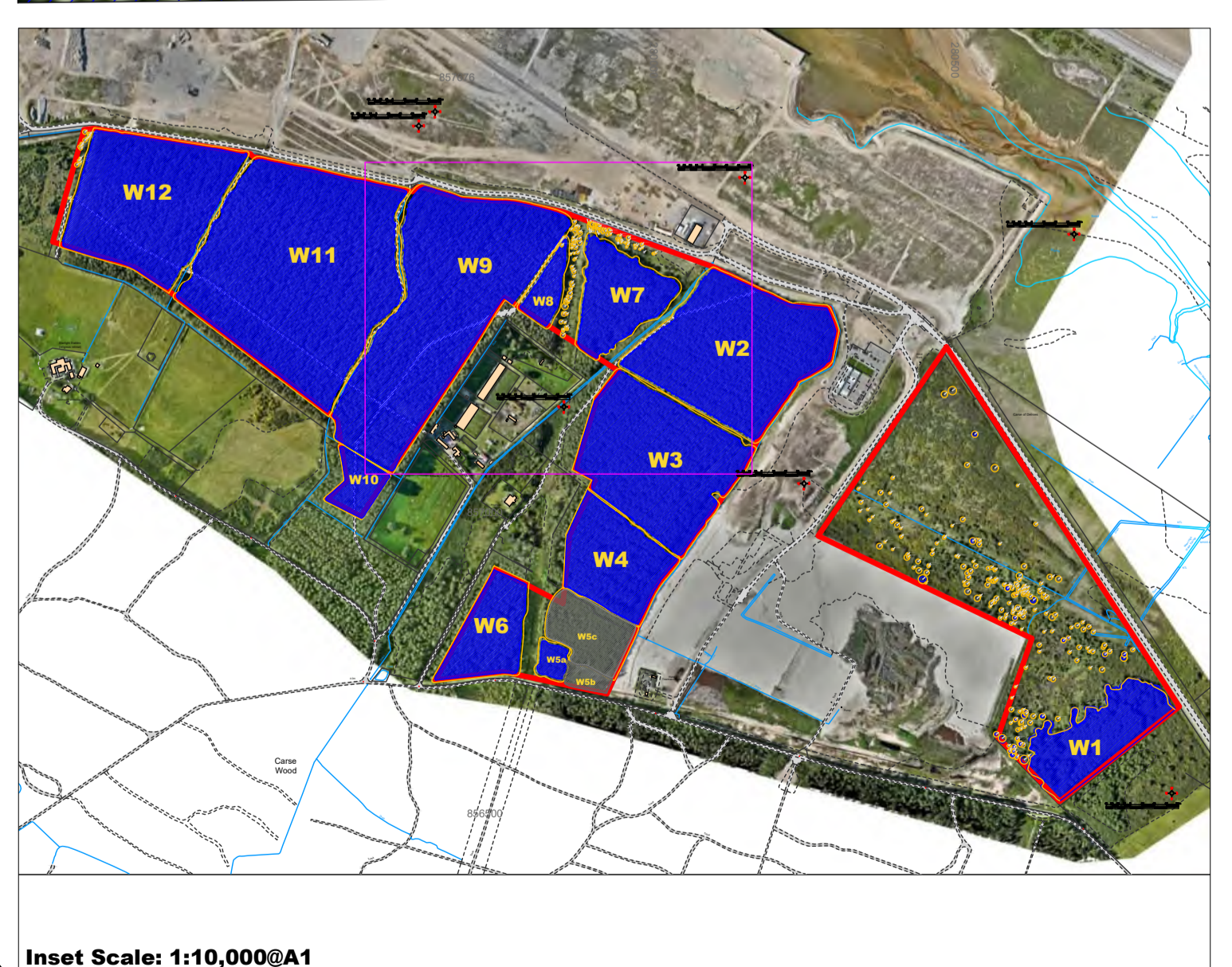
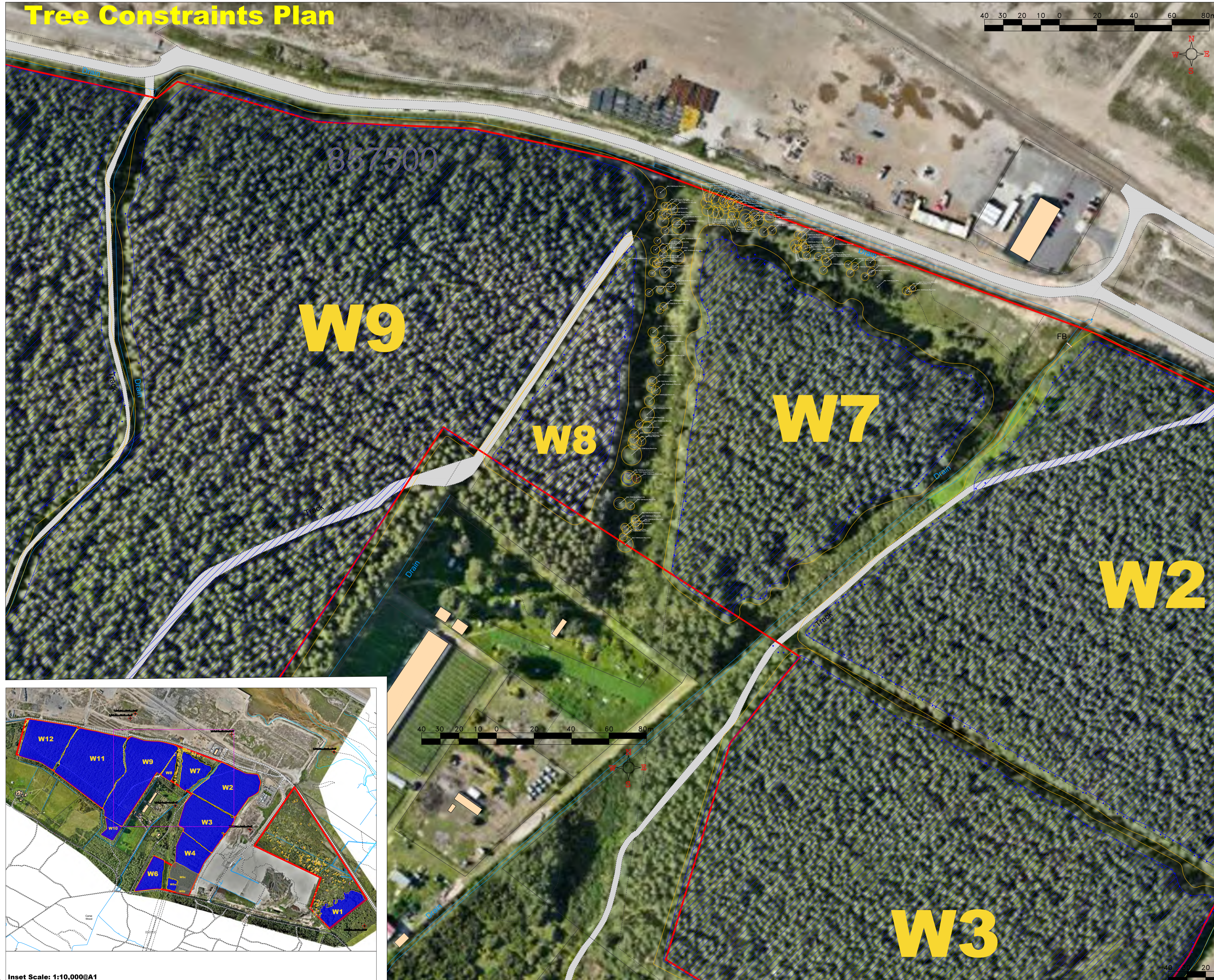


Tree Constraints Plan



General Notes

KEY

Individual tree identified during survey:

Tree Reference, Common Name and Root Protection Area radius
Ref: T001 Silver Birch 2.3m

Stem

Tree Canopy

Root Protection Area (RPA)

Colours are in accordance with BS5837:2012 quality grading:

Red: Unsuitable for retention (U)
Grey: Low quality (C)
Blue: Moderate quality (B)
Green: High quality (A)

Root Protection Area (RPA): The minimum area around a tree deemed to contain sufficient roots and rooting volume to maintain the tree's viability, and where the protection of the roots and soil structure is treated as a priority (BS5937:2012)

Woodland compartment identified during survey (Note: Yellow line denotes Root Protection Area):

Moderate Quality (B) Woodland Compartment

Low Quality (C) Woodland Compartment

Survey Area Boundary

The tree survey was performed between 23.07.2024 & 02.08.2024 by Callum McCutcheon BSc (Hons) M.Arbor.A in accordance with BS5837:2012. The Tree Constraints Plan (001) and the Tree Survey Schedule have also been produced in accordance with BS5837:2012

Tree survey performed by Callum McCutcheon BSc (Hons) M.Arbor.A on 23.07.2024-02.08.2024

Urban-Arb
Arboricultural Consultants

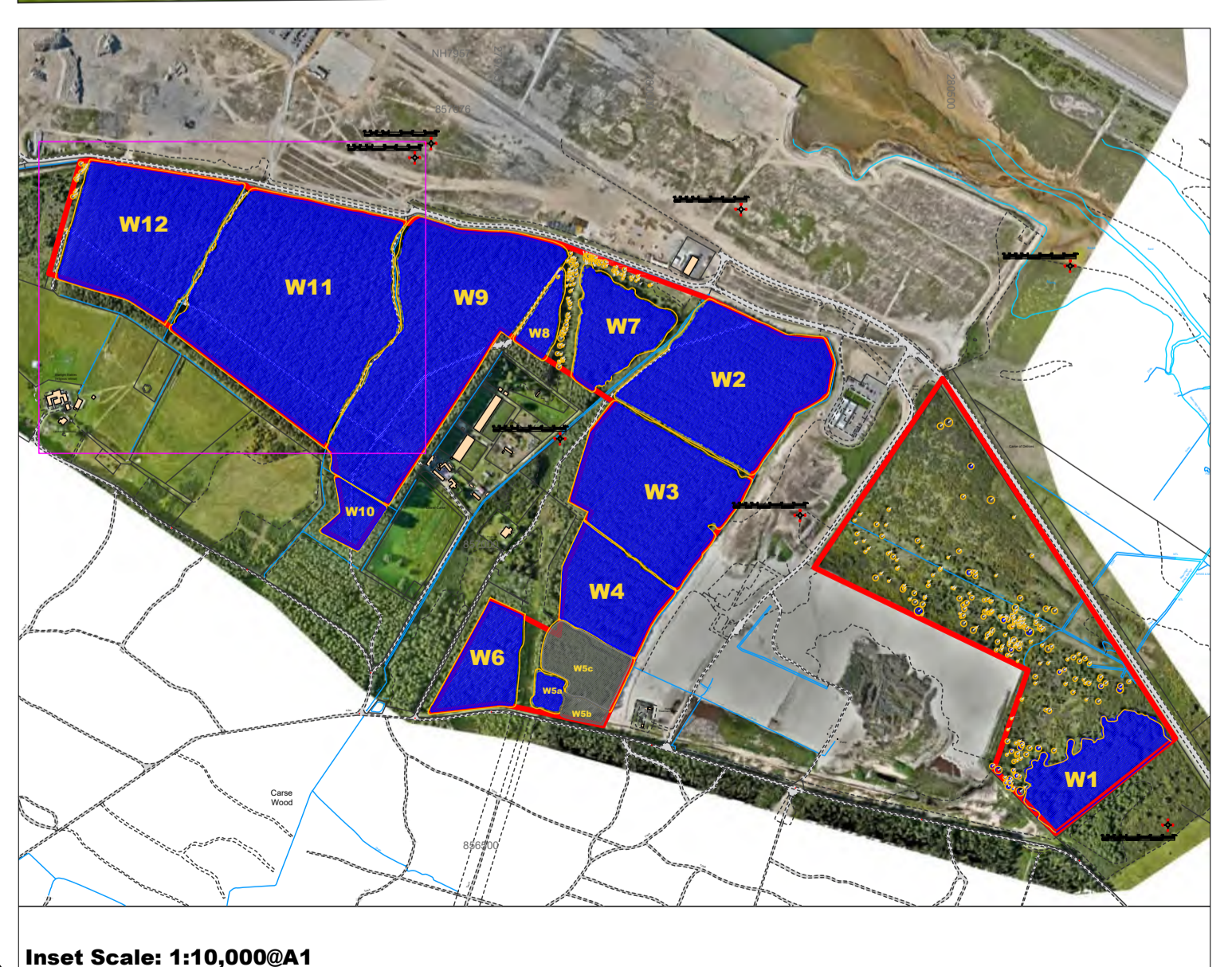
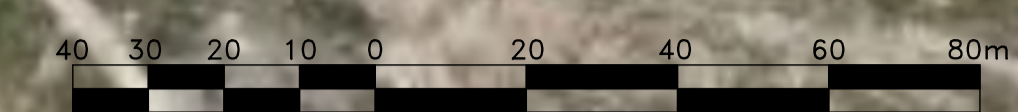
No.	Revision/Issue	Date

Firm Name and Address
Urban-Arb LLP
Dolphin Cottage
11 The Muir
Bogmoor
Spey Bay
Fochabers
Moray IV32 7PN
www.urban-arb.com

Project Name and Address
Ardersier Port

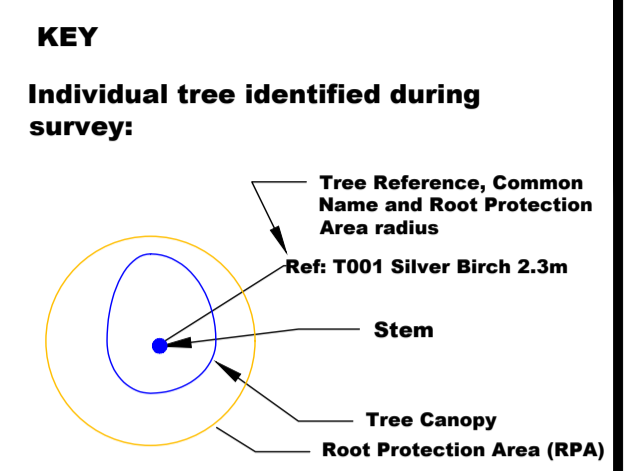
Project	Sheet
TREE CONSTRAINTS PLAN	
Date	
07.08.2024	001(4)
Scale	
1:1000@A1	

Tree Constraints Plan



Inset Scale: 1:10,000@A1

General Notes

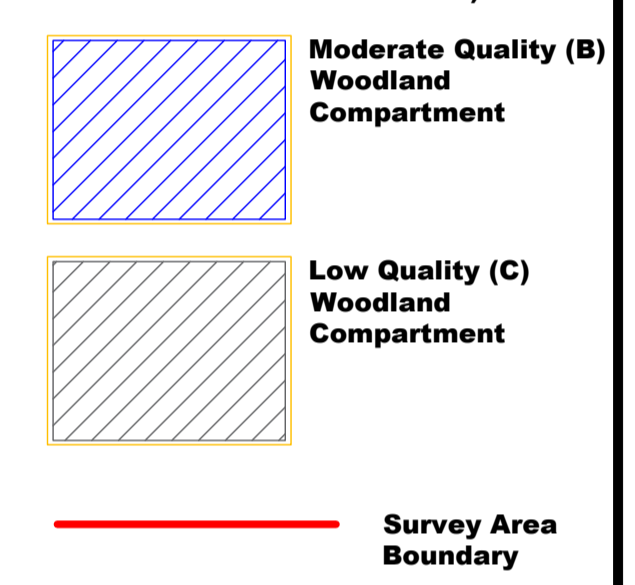


Colours are in accordance with BS5837:2012 quality grading:

- Red: Unsuitable for retention (U)
- Grey: Low quality (C)
- Blue: Moderate quality (B)
- Green: High quality (A)

Root Protection Area (RPA): The minimum area around a tree deemed to contain sufficient roots and rooting volume to maintain the tree's viability, and where the protection of the roots and soil structure is treated as a priority (BS5937:2012)

Woodland compartment identified during survey (Note: Yellow line denotes Root Protection Area):



The tree survey was performed between 23.07.2024 & 02.08.2024 by Callum McCutcheon BSc (Hons) M.Arbor.A in accordance with BS5837:2012. The Tree Constraints Plan (001) and the Tree Survey Schedule have also been produced in accordance with BS5837:2012

Tree survey performed by Callum McCutcheon BSc (Hons) M.Arbor.A on 23.07.2024-02.08.2024



No.	Revision/Issue	Date

Firm Name and Address
Urban-Arb LLP
 Dolphin Cottage
 11 The Muir
 Bogmoor
 Spey Bay
 Fochabers
 Moray IV32 7PN
 www.urban-arb.com

Project Name and Address
Ardersier Port

Project	Sheet
TREE CONSTRAINTS PLAN	
Date	
07.08.2024	001(5)
Scale	
1:1000@A1	

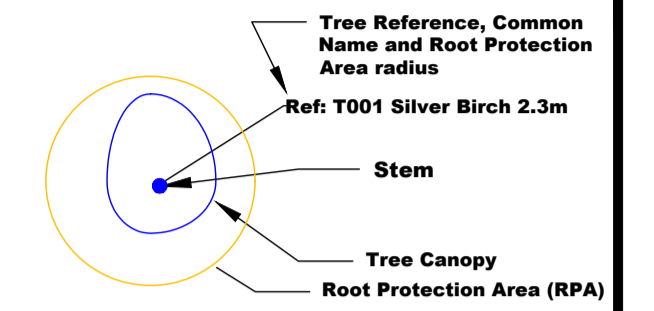
Tree Constraints Plan



General Notes

KEY

Individual tree identified during survey:

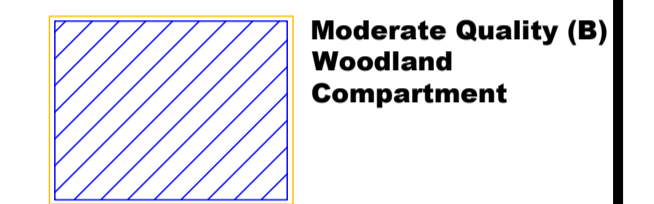


Colours are in accordance with BS5837:2012 quality grading:

- Red: Unsuitable for retention (U)
- Grey: Low quality (C)
- Blue: Moderate quality (B)
- Green: High quality (A)

Root Protection Area (RPA): The minimum area around a tree deemed to contain sufficient roots and rooting volume to maintain the tree's viability, and where the protection of the roots and soil structure is treated as a priority (BS5937:2012)

Woodland compartment identified during survey (Note: Yellow line denotes Root Protection Area):



The tree survey was performed between 23.07.2024 & 02.08.2024 by Callum McCutcheon BSc (Hons) M.Arbor.A in accordance with BS5837:2012. The Tree Constraints Plan (001) and the Tree Survey Schedule have also been produced in accordance with BS5837:2012

Tree survey performed by Callum McCutcheon BSc (Hons) M.Arbor.A on 23.07.2024-02.08.2024



No.	Revision/Issue	Date

Firm Name and Address
Urban-Arb LLP
 Dolphin Cottage
 11 The Muir
 Bogmoor
 Spey Bay
 Fochabers
 Moray IV32 7PN
 www.urban-arb.com

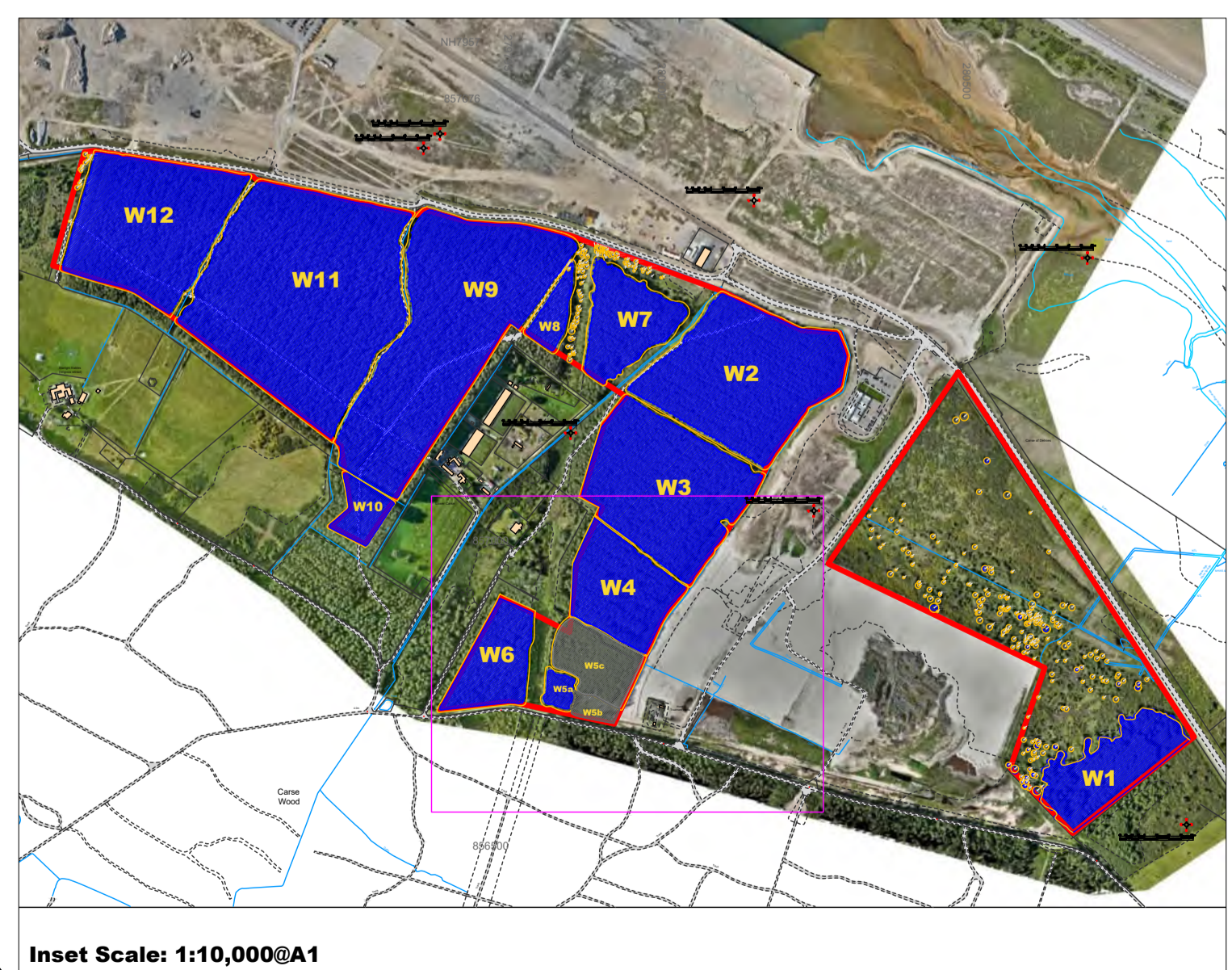
Project Name and Address
Ardersier Port

Project TREE CONSTRAINTS PLAN	Sheet
Date 07.08.2024	001(6)
Scale 1:1000@A1	

Inset Scale: 1:10,000@A1

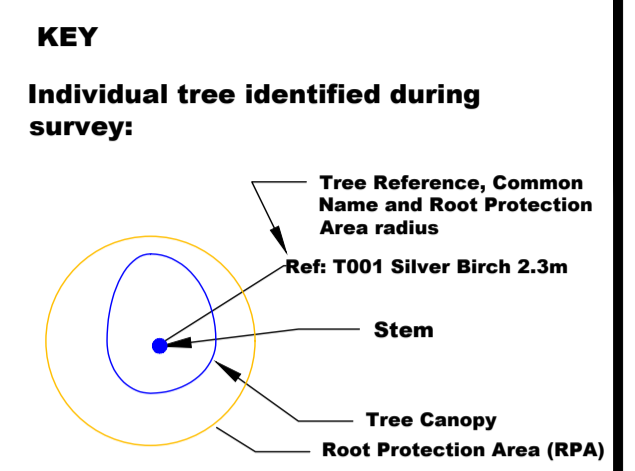
Tree Constraints Plan

Lower Carse



Inset Scale: 1:10,000@A1

General Notes



Colours are in accordance with BS5837:2012 quality grading:

- Red: Unsuitable for retention (U)
- Grey: Low quality (C)
- Blue: Moderate quality (B)
- Green: High quality (A)

Root Protection Area (RPA): The minimum area around a tree deemed to contain sufficient roots and rooting volume to maintain the tree's viability, and where the protection of the roots and soil structure is treated as a priority (BS5937:2012)

Woodland compartment identified during survey (Note: Yellow line denotes Root Protection Area):



The tree survey was performed between 23.07.2024 & 02.08.2024 by Callum McCutcheon BSc (Hons) M.Arbor.A in accordance with BS5837:2012. The Tree Constraints Plan (001) and the Tree Survey Schedule have also been produced in accordance with BS5837:2012

Tree survey performed by Callum McCutcheon BSc (Hons) M.Arbor.A on 23.07.2024-02.08.2024



No.	Revision/Issue	Date

Firm Name and Address
Urban-Arb LLP
 Dolphin Cottage
 11 The Muir
 Bogmoor
 Spey Bay
 Fochabers
 Moray IV32 7PN
 www.urban-arb.com

Project Name and Address
Ardersier Port

Project	Sheet
TREE CONSTRAINTS PLAN	
Date	
07.08.2024	001(7)
Scale	
1:1000@A1	