

ARDERSIER PORT ENERGY TRANSITION FACILITY PORT EXTENSION



November 2025

Appendix 5.4 Tree Constraints Plan

Tree Constraints Plan



Area ID	Description	Population data	Species Present	AWI Designation	Native Woodland	BSS837 Quality Grade
W1	Upland Birchwood	Early-mature Mature Birch woodland with occasional Scots Pine and Goat Willow. Average height 13m. Average stem diameter 300. Spacing variable.	Betula pendula, Pinus sylvestris, Salix caprea	None	Yes	B
W2	Mature Scots Pine plantation woodland	Mature Scots Pine plantation woodland. Average height 25. Average stem diameter 350mm (North site) 400mm other areas. Spacing 2-3m.	Pinus sylvestris	None	Yes	B
W3	Mature Scots Pine plantation woodland	Mature Scots Pine plantation woodland. Average height 25. Average stem diameter 400mm. Spacing 2-3m.	Pinus sylvestris	None	Yes	B
W4	Mature Scots Pine plantation woodland	Mature Scots Pine plantation woodland. Average height 25. Average stem diameter 400mm. Spacing 2-3m.	Pinus sylvestris	None	Yes	B
W5 (a, b, c)	W5a: Mature Scots Pine plantation woodland W5b: Wind damaged trees W5c: Dense pole stage Sitka Spruce Plantation with more mature Lodgepole pine on eastern boundary	W5a: Scots Pine with Lodgepole Pine on eastern and southern boundary. Average stem diameter 300-400mm. Spacing 2m. Average height 27m W5b: Wind damaged Lodgepole Pine with Birch and Pine regeneration. W5c: Dense pole stage Sitka Spruce with mature Lodgepole Pine on Eastern boundary. Average height 10-15m. Average stem diameter 200. Spacing very dense	Pinus sylvestris, Pinus contorta, Betula sitchensis, Betula pendula	None	Only W5a	W5a: B W5b: C W5c: C
W6	Mature Scots Pine plantation woodland	Mature Scots Pine plantation woodland. Average height 25. Average stem diameter 400mm. Spacing 2-3m.	Pinus sylvestris	None	Yes	B
W7	Mature Scots Pine plantation woodland	Mature Scots Pine plantation woodland. Average height 25. Average stem diameter 400mm. Spacing 2-3m.	Pinus sylvestris	None	Yes	B
W8	Mature Scots Pine plantation woodland	Mature Scots Pine plantation woodland. Average height 25. Average stem diameter 400-500mm other areas. Spacing 2-3m.	Pinus sylvestris	None	Yes	B
W9	Mature Scots Pine plantation woodland	Mature Scots Pine plantation woodland. Average height 25. Average stem diameter 350mm (North site) 400mm other areas. Spacing 2-3m.	Pinus sylvestris	None	Yes	B
W10	Mature Scots Pine plantation woodland	Mature Scots Pine plantation woodland. Average height 25. Average stem diameter 400mm. Spacing 2-3m.	Pinus sylvestris	None	Yes	B
W11	Mature Scots Pine plantation woodland	Mature Scots Pine plantation woodland. Average height 25. Average stem diameter 350mm (North site) 400mm other areas. Spacing 2-3m.	Pinus sylvestris	None	Yes	B
W12	Mature Scots Pine plantation woodland	Mature Scots Pine plantation woodland. Average height 25. Average stem diameter 350mm (North site) 400mm other areas. Spacing 2-3m.	Pinus sylvestris	None	Yes	B

BSS837:2012 Cascade chart for tree quality assessment

Category & Definition	Criteria (including subcategories where appropriate)	Identification on plan
Trees unsuitable for retention		
Category U	Those in such a condition that they cannot realistically be retained as living trees in the context of the current land use for longer than 10 years	Red on plan RGB 127,0,0
Trees to be considered for retention		
Category A	Trees that are particularly good examples of their species, especially if rare or unusual; or those that are essential components of groups or formal or semi-formal arboricultural features (e.g. the dominant and/or principal trees within an avenue)	Light Green RGB 0,255,0
Category B	Trees that might be included in category A, but are downgraded because of impaired condition (e.g. presence of significant though remediable defects, including unsympathetic past management and storm damage), such that they are unlikely to be suitable for retention for beyond 40 years; or trees lacking the special quality necessary to merit the category A designation	Mid low RGB 0,0,255
Category C	Trees of low quality with an estimated remaining life expectancy of at least 10 years, or young trees with a stem diameter below 150 mm	Grey RGB 091,091,091

General Notes

KEY
Individual tree identified during survey:

Colours are in accordance with BSS837:2012 quality grading:
Red: Unsuitable for retention (U)
Grey: Low quality (C)
Blue: Moderate quality (B)
Green: High quality (A)

Root Protection Area (RPA): The minimum area around a tree deemed to contain sufficient roots and rooting volume to maintain the tree's viability, and where the protection of the roots and soil structure is treated as a priority (BS5937:2012)

Woodland compartment identified during survey (Note: Yellow line denotes Root Protection Area):

- Moderate Quality (B) Woodland Compartment
- Low Quality (C) Woodland Compartment

Survey Area Boundary

The tree survey was performed between 23.07.2024 & 02.08.2024 by Callum McCutcheon BSc (Hons) M.Arbor.A in accordance with BSS837:2012. The Tree Constraints Plan (001) and the Tree Survey Schedule have also been produced in accordance with BSS837:2012

Tree survey performed by Callum McCutcheon BSc (Hons) M.Arbor.A on 23.07.2024-02.08.2024

Urban-Arb LLP
Arboricultural Consultants

No.	Revision/Issue	Date
-----	----------------	------

Firm Name and Address
Urban-Arb LLP
 Dolphin Cottage
 11 The Muir
 Bogmoor
 Spey Bay
 Fochabers
 Moray IV32 7PN
 www.urban-arb.com

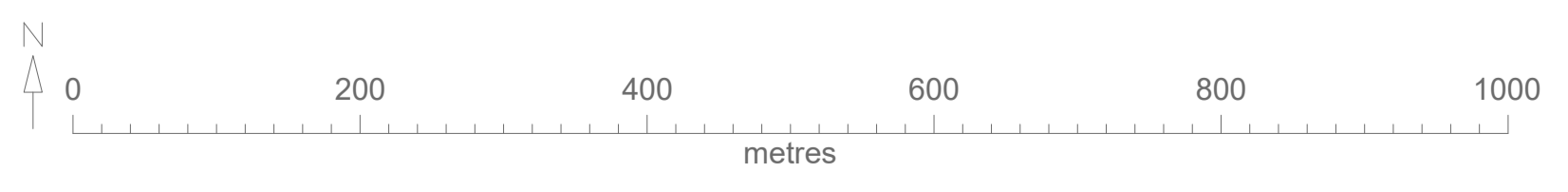
Project Name and Address
Ardersier Port

Project
TREE CONSTRAINTS PLAN

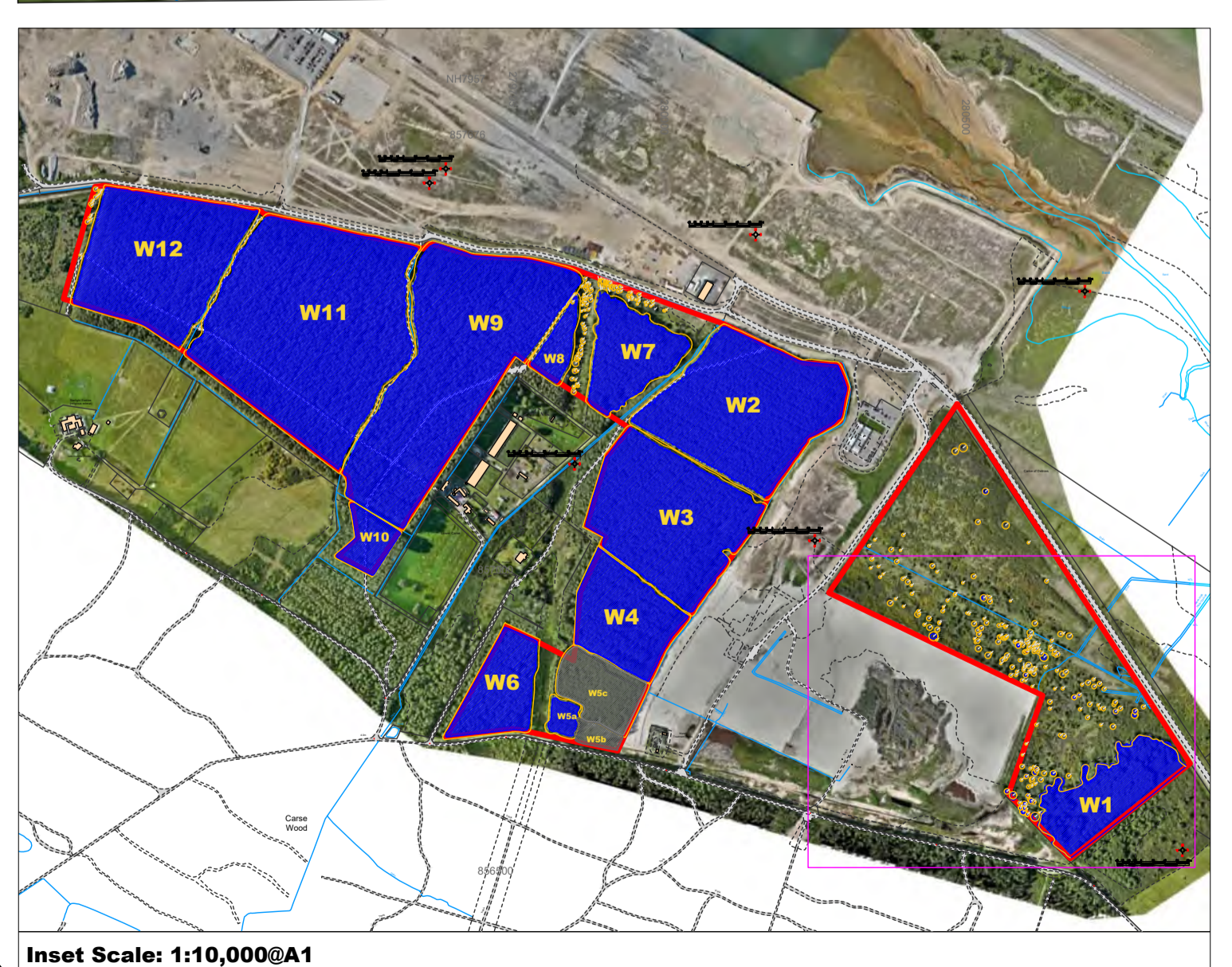
Date
07.08.2024

Scale
1:5000@A1

Sheet
001(1)



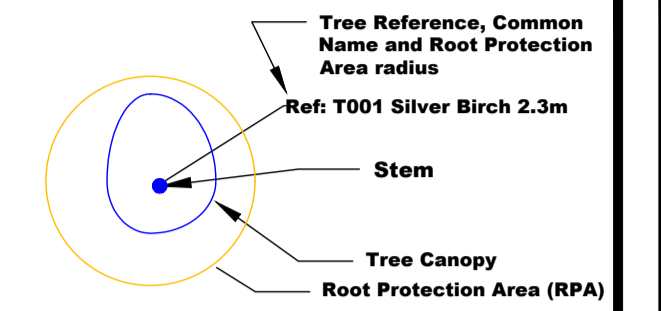
Tree Constraints Plan



General Notes

KEY

Individual tree identified during survey:

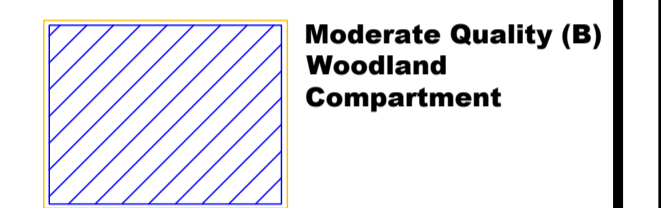


Colours are in accordance with BS5837:2012 quality grading:

- Red: Unsuitable for retention (U)
- Grey: Low quality (C)
- Blue: Moderate quality (B)
- Green: High quality (A)

Root Protection Area (RPA): The minimum area around a tree deemed to contain sufficient roots and rooting volume to maintain the tree's viability, and where the protection of the roots and soil structure is treated as a priority (BS5937:2012)

Woodland compartment identified during survey (Note: Yellow line denotes Root Protection Area):



— Survey Area Boundary

The tree survey was performed between 23.07.2024 & 02.08.2024 by Callum McCutcheon BSc (Hons) M.Arbor.A in accordance with BS5837:2012. The Tree Constraints Plan (001) and the Tree Survey Schedule have also been produced in accordance with BS5837:2012

Tree survey performed by Callum McCutcheon BSc (Hons) M.Arbor.A on 23.07.2024-02.08.2024



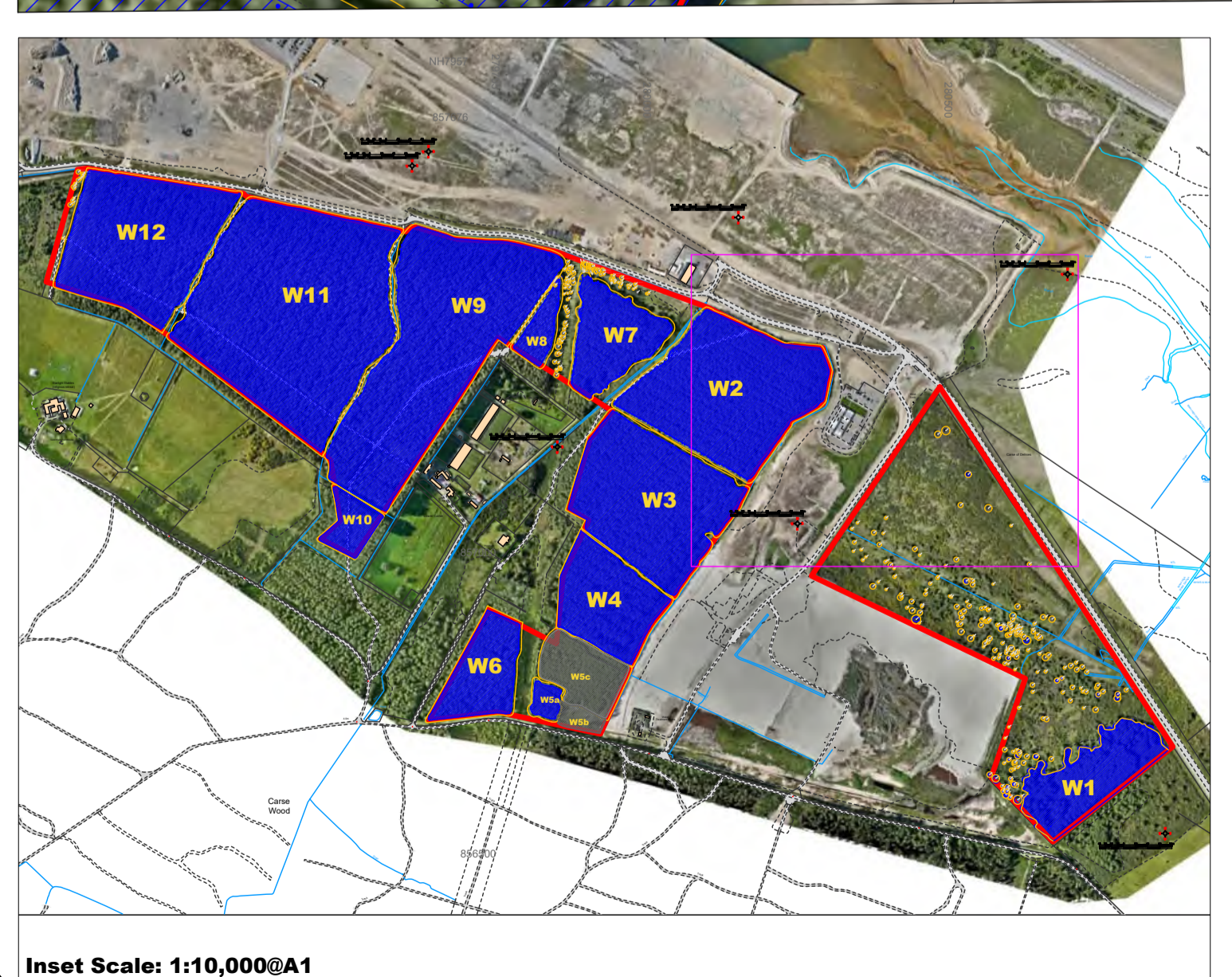
No.	Revision/Issue	Date

Firm Name and Address
Urban-Arb LLP
 Dolphin Cottage
 11 The Muir
 Bogmoor
 Spey Bay
 Fochabers
 Moray IV32 7PN
 www.urban-arb.com

Project Name and Address
Ardersier Port

Project TREE CONSTRAINTS PLAN	Sheet
Date 07.08.2024	001(2)
Scale 1:1000@A1	

Tree Constraints Plan



Inset Scale: 1:10,000@A1

General Notes

KEY

Individual tree identified during survey:

Tree Reference, Common Name and Root Protection Area radius
Ref: T001 Silver Birch 2.3m

Stem

Tree Canopy

Root Protection Area (RPA)

Colours are in accordance with BS5837:2012 quality grading:

Red: Unsuitable for retention (U)
Grey: Low quality (C)
Blue: Moderate quality (B)
Green: High quality (A)

Root Protection Area (RPA): The minimum area around a tree deemed to contain sufficient roots and rooting volume to maintain the tree's viability, and where the protection of the roots and soil structure is treated as a priority (BS5937:2012)

Woodland compartment identified during survey (Note: Yellow line denotes Root Protection Area):

Moderate Quality (B) Woodland Compartment

Low Quality (C) Woodland Compartment

Survey Area Boundary

The tree survey was performed between 23.07.2024 & 02.08.2024 by Callum McCutcheon BSc (Hons) M.Arbor.A in accordance with BS5837:2012. The Tree Constraints Plan (001) and the Tree Survey Schedule have also been produced in accordance with BS5837:2012

Tree survey performed by Callum McCutcheon BSc (Hons) M.Arbor.A on 23.07.2024-02.08.2024

Urban-Arb
Arboricultural Consultants

No.	Revision/Issue	Date

Firm Name and Address
Urban-Arb LLP
Dolphin Cottage
11 The Muir
Bogmoor
Spey Bay
Fochabers
Moray IV32 7PN
www.urban-arb.com

Project Name and Address
Ardersier Port

Project TREE CONSTRAINTS PLAN	Sheet
Date 07.08.2024	001(3)
Scale 1:1000@A1	