

01 | WELCOME

One History. One Community. One Wyndford.



Public Consultation 1

April 1st 2025



WE ARE HERE

Public Consultation 2

21st May 2025

Submission of Full Planning Application

Autumn 2025



Completion of Development

2030

Exhibition

June 2024



Works Start on Site

2026



This presentation has been created for the public to review the proposals for the **redevelopment of the Wyndford estate**. These proposals are currently under development and so **feedback is encouraged** from all visitors. This is a follow up event displaying developed proposals after the first consultation on **1st April 2025 at Maryhill Burgh Halls**.



391
NEW HOMES



NEW HOMES LETTINGS PLAN
WILL PRIORITISE TENANTS WHO
LEFT WYNDFORD AND ADDRESS
LOCAL HOUSING NEEDS



155 FAMILY
HOMES (3+BEDS)

85%

332 SOCIAL
HOUSING
HOMES



NEW PURPOSE
BUILT TWO
STOREY
COMMUNITY
HUB



IMPROVED
PUBLIC SPACES &
NEW PLAY SPACES



How can you help?

If you have any questions, please feel free to ask a member of the team.

We encourage attendees to complete the online feedback form, in order to share their comments on the proposed development.



02 | PREVIOUS CONSULTATION SUMMARY

One History. One Community. One Wyndford.

Who attended the consultation?



57 ATTENDEES



22 WRITTEN FEEDBACK FORMS RECEIVED



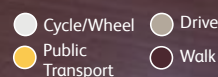
DIVERSE RANGE OF AGES



MAJORITY HEARD FROM WORD OF MOUTH



MAJORITY WALKED TO EVENT



74%

FOUND FIRST CONSULTATION USEFUL

What did you think?

'A fresh breath of air to the area, looks very welcoming and love the inclusion of pockets of outdoor landscaping.'

'I think they need to have more seating area round Wyndford estate and make sure there is more 3-4 bedrooms... Some plans look good but some would just not work like the park near the Kelvin.'

'Very keen to have historical elements included in the project'

'Would like to see community spaces like growing spaces and spaces to sit available sooner than later.'

'Well thought out, lots of green space, great layout, community centre is brilliant, I like there are lots of play areas planned'



'Wayfinding in this area is currently very difficult so would be good to see this improved in future proposals'

'...not the lovely family houses we were promised, just more high rise...'

Really good for whole area hope it matches with rest of estate.

Explore our other boards - we have listened and taken on board your helpful feedback to help shape this proposal

How can you help?

If you have any questions, please feel free to ask a member of the team.

We encourage attendees to complete the online feedback form, in order to share their comments on the proposed development.



03 | One History. One Community. One Wyndford.

ONE WYNDFORD

You Said: Improve Connectivity

We propose:

To create a unified Wyndford Estate we propose to increase the pedestrian, cycle and vehicular routes to allow improved access from Maryhill Road, through the existing and new areas to the Kelvin Walkway.



Pedestrian Connections



Vehicular Connections

Existing Wyndford Estate

Wayfinding Buildings



The Cricket Pitch / Public Green

High Rise Forms

Shared Zone

Vehicular Roads & Parking

Residents Private Courtyard

Medium Density Housing



How can you help?

If you have any questions, please feel free to ask a member of the team.

We encourage attendees to complete the online feedback form, in order to share their comments on the proposed development.



04 | One History. One Community. One Wyndford. IDENTITY & CHARACTER

You Said: Incorporate Historical Elements We propose:

Linking to the past and recognising the importance of the historic buildings of Wyndford and wider Maryhill is a key part of our proposals. Key features found in the existing buildings are acknowledged in the new proposals.



①

Vertical Windows and Proportions



②

Pitched Roofs



③

Arched Entrances

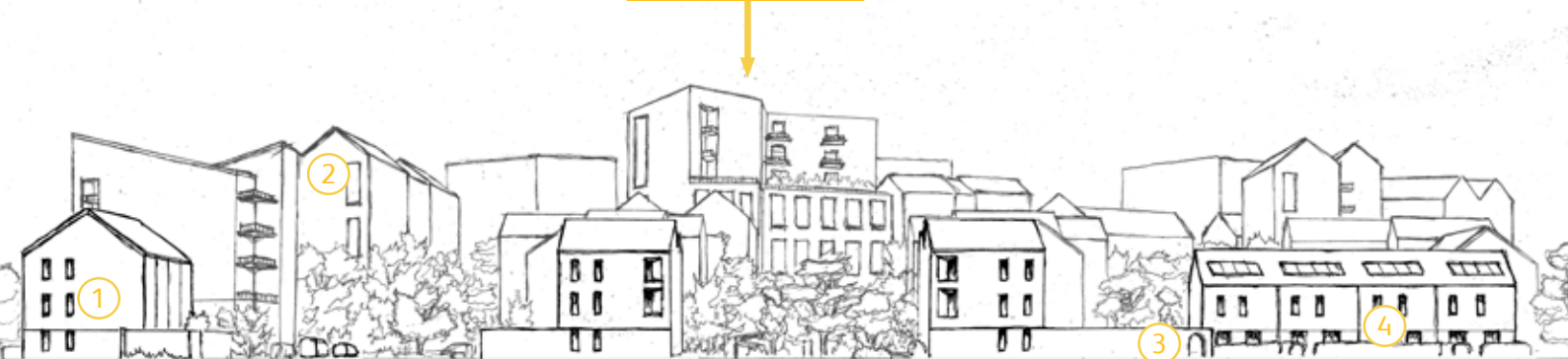


④

Linear Blocks

Proposed Wyndford Estate

Community Hub



Pitched Gables



High Rise Forms



'Wyndford Avenue' - Open Space



Medium Density Housing



Low Rise Housing

The New Proposals will Celebrate the People and Places which have Helped Shape the Area.



Jessie Stephen - Acknowledging People Who Fought for Women's Rights



Remembering the Industry of Maryhill



Acknowledging the Legacy of the Wyndford Barracks



How can you help?

If you have any questions, please feel free to ask a member of the team.

We encourage attendees to complete the online feedback form, in order to share their comments on the proposed development.



Please suggest other significant people, places, events, you feel are worth celebrating in the new proposals.

05 | One History. One Community. One Wyndford.

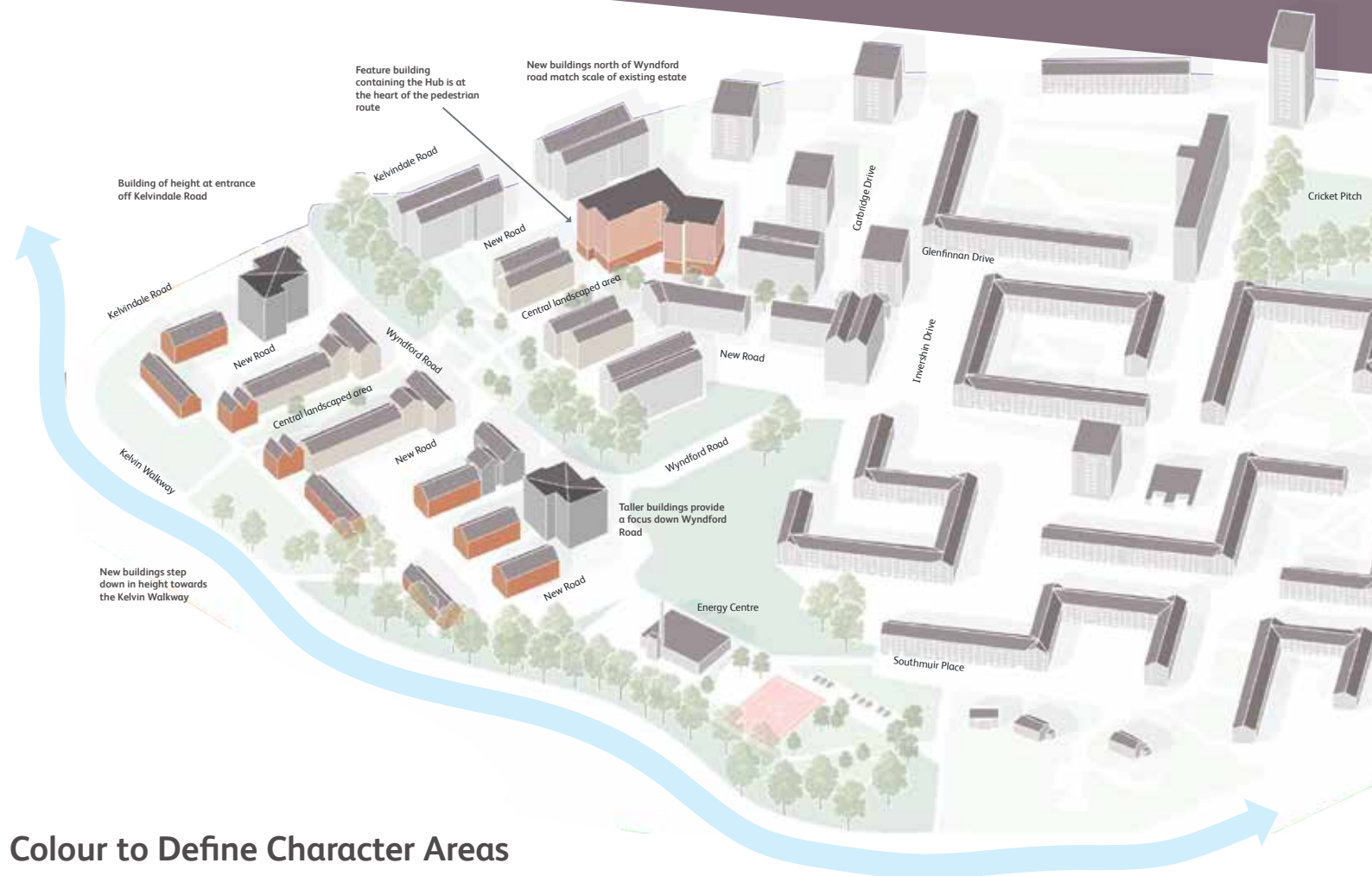
GETTING AROUND

You Said: Improve Wayfinding

We propose:

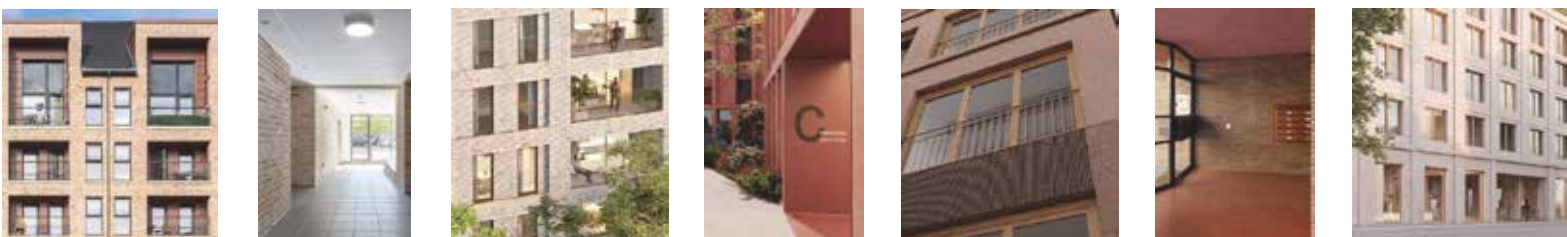
Navigating the estate is central to our proposal. The masterplan uses varied building heights, distinct character zones, key marker buildings, and colour to support intuitive wayfinding and celebrate Wyndford's identity.

Variety in Building Forms & Scale



Colour to Define Character Areas

Brick colours phasing across the site create a transition from the greys and light colours of existing Wyndford to bolder rust / red sandstone colours around the SINC area providing contrast to the trees. Precedents below demonstrate how colour can be used as features at entrances and in balconies to bring character and identity to buildings.



How can you help?

If you have any questions, please feel free to ask a member of the team.

We encourage attendees to complete the online feedback form, in order to share their comments on the proposed development.



06 | One History. One Community. One Wyndford.

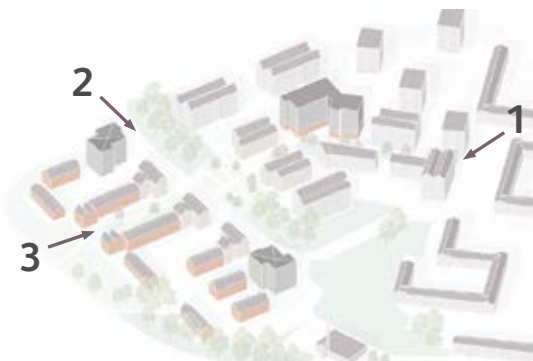
LOOK & FEEL



1. View looking along Invershin Drive



2. View looking along Wyndford Road



3. View looking up central landscaped area

How can you help?

If you have any questions, please feel free to ask a member of the team.

We encourage attendees to complete the online feedback form, in order to share their comments on the proposed development.



07 | One History. One Community. One Wyndford. LANDSCAPE SPACES

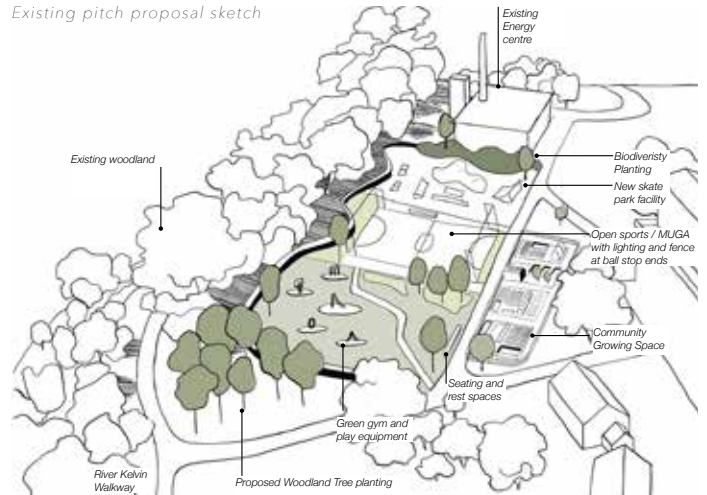
You Said: A Variety of Open Space
We propose:



Existing pitch proposal plan



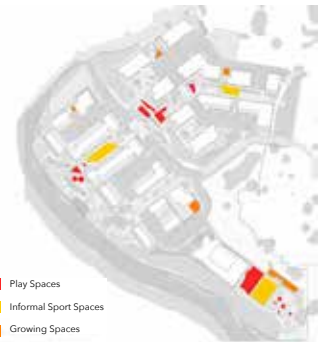
Existing pitch proposal sketch



Green Spaces



Lawns and Rest Spaces



Sports, Play and Growing Facilities

How can you help?

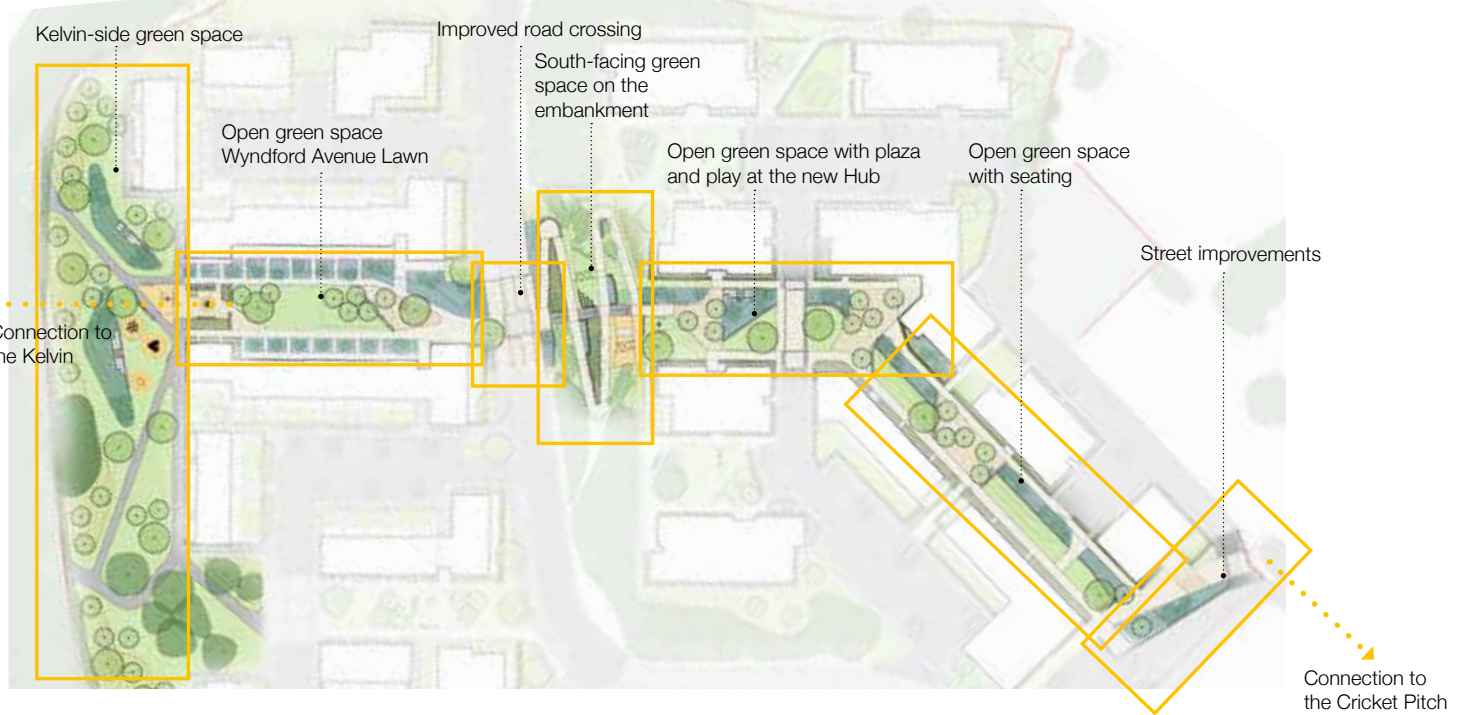
If you have any questions, please feel free to ask a member of the team.

We encourage attendees to complete the online feedback form, in order to share their comments on the proposed development.



08 | One History. One Community. One Wyndford. CENTRAL GREEN

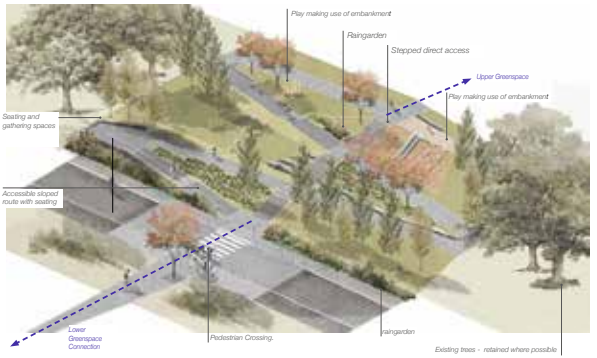
You Said: More Seating and Play Spaces
We propose:



Lower green space design



Embankment landscape



Upper green space design



Spaces for people



Plaza space at the hub



Green space



Nature and water

How can you help?

If you have any questions, please feel free to ask a member of the team.

We encourage attendees to complete the online feedback form, in order to share their comments on the proposed development.



09 | One History. One Community. One Wyndford. HOUSING & COMMUNITY

You Said: More 3-4 Bedrooms & Family Homes
We propose:

Housing Mix

- 1 bedroom homes - 105
- 2 bedroom homes - 131
- 3 bedroom homes - 122
- 4 bedroom homes - 33



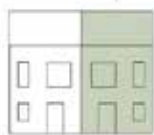
Massing & Form Factor



Architect



Maisonette



Flat House

How can you help?

If you have any questions, please feel free to ask a member of the team.

We encourage attendees to complete the online feedback form, in order to share their comments on the proposed development.



Note: The proposed homes are a mix of terraced houses, maisonettes and flats, with 10% of the total homes being wheelchair accessible.

10 | One History. One Community. One Wyndford.

A NEW COMMUNITY HUB



**Over 3x
Larger**



APPROXIMATELY
800m²



LOCATED AT THE HEART OF
THE WYNDFORD ESTATE

THAN DESIGN SHOWN
AT PREVIOUS WYNDFORD
EXHIBITION

SIMPLE LAYOUT TO
FACILITATE EASY
NAVIGATION

FLOOR AREA DEDICATED TO
THE COMMUNITY

TWO STOREY HIGH

PROVIDES IMPROVED
FACILITIES FOR THE
COMMUNITY TO ENJOY



1 Hub Location



2 Hall Interior



3 New Community Cafe



How can you help?

If you have any questions, please feel free to ask a member of the team.

We encourage attendees to complete the online feedback form, in order to share their comments on the proposed development.

