

SOCIAL IMPACT CONSULTANCY

BUILDING BETTER PLACES, DELIVERING STRONGER RETURNS.

Our Social Impact team helps you integrate social impact into your projects, from investment through to procurement and planning. We identify place-based opportunities that deliver on strategic goals and drive development success.

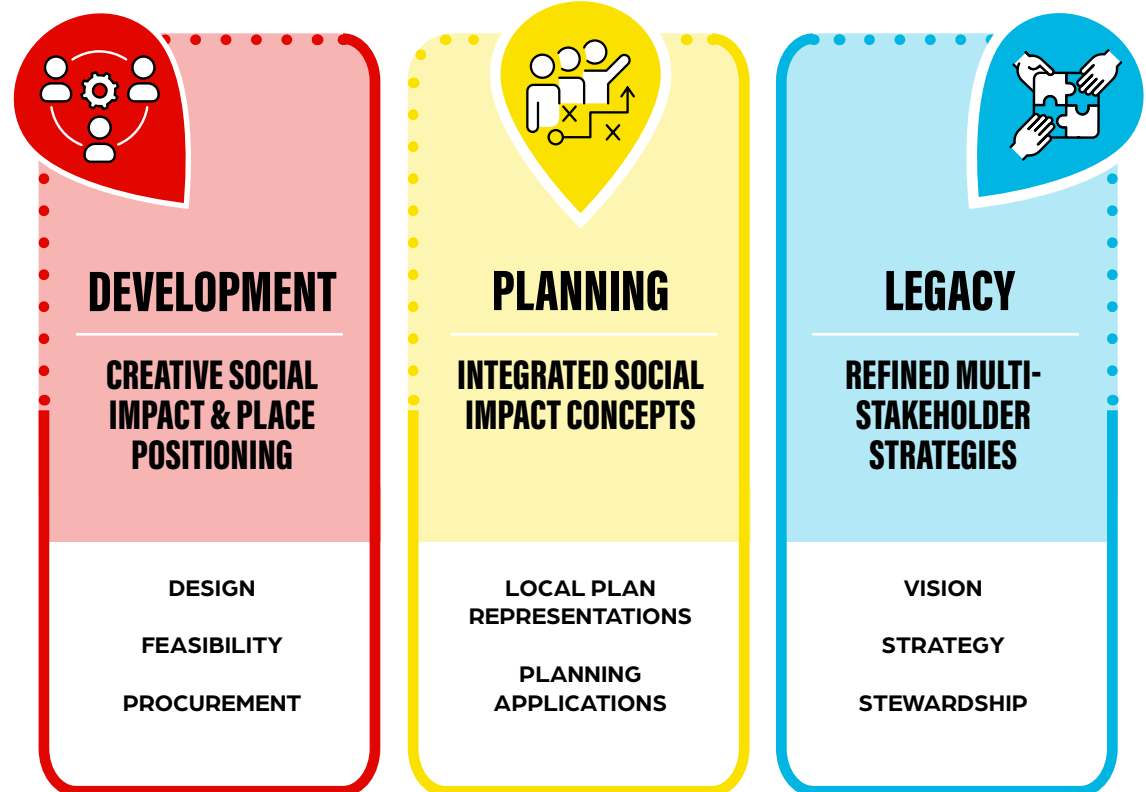
WE PARTNER WITH YOU TO:

Understand: Analyse local context, policy, stakeholders, challenges and opportunities.

Design: Develop impactful and viable social impact strategies.

Communicate: Craft compelling narratives to showcase your positive contributions.

UNLOCK THE POWER OF PLACE-BASED IMPACT FOR DEVELOPMENT SUCCESS THROUGH...



WHAT IS SOCIAL IMPACT IN PROPERTY?

*In property, Social Impact is the effect that the built environment has on its inhabitants, users, and the wider community—shaped by decisions from investment, design, delivery, and use, through to long-term stewardship. It encompasses contributions to environmental sustainability, inclusive economies, and social well-being. **Social Value** attracts different definitions, but at its core represents the potential, measured or perceived benefit of this impact, arising from cumulative activities.*

WE'VE PARTNERED WITH OUR CLIENTS TO ACHIEVE...



SAVILLE THEATRE YOO CAPITAL

Outcome: The project delivered a detailed Social Value Statement that strengthened the planning application. It clearly outlined stakeholder commitments, ensuring the redevelopment would provide lasting benefits to the local community.

Context: Yoo Capital is redeveloping a historic Camden theatre into a dynamic cultural and hospitality hub.

Project: Montagu Evans broadened its planning role to include social impact guidance, bringing together key stakeholders like Cirque du Soleil and Kier Construction to shape a strong social value strategy.



WHITECHAPEL LIFE SCIENCES CLUSTER BARTS NHS TRUST, NHS PS, QMUL, LATERAL, BGO

Outcome: The project delivered a strong Social Impact Strategy, defining a clear vision and action plan for the cluster. It aligns stakeholders around a long-term goal, supporting planning, investment, and the cluster's unique positioning.

Context: A life sciences hub is emerging in Whitechapel, bringing together healthcare, research, and commercial partners.

Project: The strategy balanced messaging with practical funding and delivery routes. A baseline analysis assessed existing projects to shape a sustainable, long-term impact approach.



CAMLEY STREET BALLYMORE

Outcome: Montagu Evans helped Ballymore and Lateral secure the role of Camden's development partner at Camley Street.

Context: In 2024, LB Camden sought a partner for a major life sciences and residential development in central London.

Project: The team's proposal emphasised long-term community commitment. Montagu Evans shaped a strategy addressing socio-economic challenges, ensuring a lasting positive impact.



STRATEGIC STEWARDSHIP HARLOW & GILSTON GARDEN TOWN

Outcome: The project produced a detailed report outlining a sustainable approach to long-term community management and placemaking, now under review by members.

Context: Harlow & Gilston Garden Town (HGGT) is a large-scale development of 22,000 homes across multiple sites.

Project: The strategy explored governance and stewardship solutions, proposing a 'strategic stewardship body' to support sustainable management across the town.

“

IT WAS A PLEASURE TO WORK WITH MONTAGU EVANS AND AKOU TO CREATE A SOCIAL VALUE FRAMEWORK FOR THE EMERGENT LIFE SCIENCES CLUSTER IN WHITECHAPEL, WHICH WILL BE ONE OF THE LARGEST, MOST CONCENTRATED LIFE SCIENCE CLUSTERS NATIONALLY. JASMINE AND TEAM COMMUNICATED REGULARLY AND EFFECTIVELY - TESTING OUR THINKING WHILE INTEGRATING COMMENTS FROM DIVERSE STAKEHOLDERS. THE OUTPUT WILL BE AN INVALUABLE GUIDE TO EMBEDDING SOCIAL VALUE AS A CORE CONSTITUTION ACROSS THE CLUSTER AS IT DEVELOPS. GRANT BOURHILL (MANAGING DIRECTOR, BARTS LIFE SCIENCES)

”

INTERESTED IN HOW WE CAN WORK TOGETHER? GET IN TOUCH AND LET US HELP YOU BUILD A BESPOKE SOCIAL IMPACT APPROACH.



JASMINE CECCARELLI-DREWRY
IS AN ASSOCIATE SPECIALISING
IN SOCIAL VALUE

M 07407 797 102



KYRA KOCIS
IS A SENIOR ADVISOR SPECIALISING
IN SOCIAL VALUE

M 020 7493 4002